

Shawnee, OK ARPA Funding

Application: YY001633



The Problem

Critical Infrastructure is Failing

- February 2021 - Extreme Weather Events exposed major system weaknesses
 - **30+** water main breaks in 1 week
- **300+** emergency water main breaks and sewer system incidents in 2021



The Impacts

Health Care Facilities

(Hospitals, Dialysis Centers,
COVID-19 Clinics)

Businesses

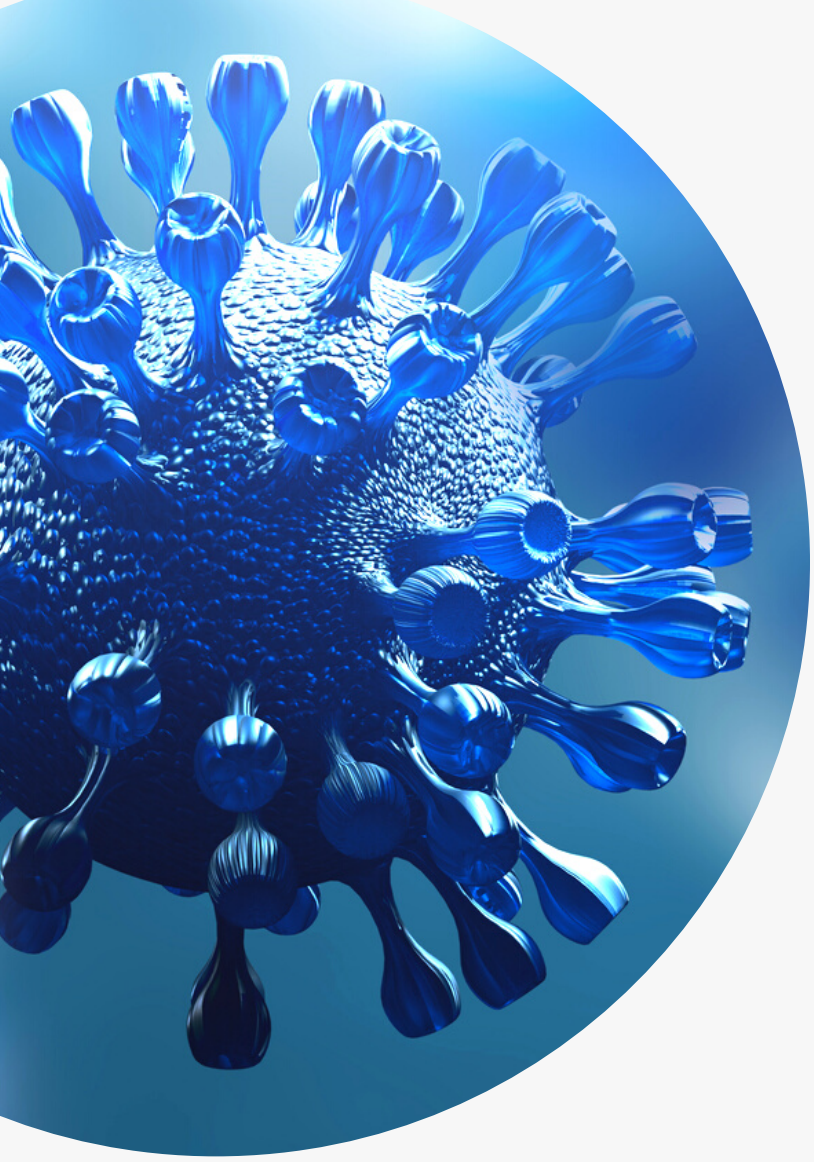
(Manufacturers,
Aerospace, Industrial)

Individuals

(Large sector of Low-
Income Homes)

Children

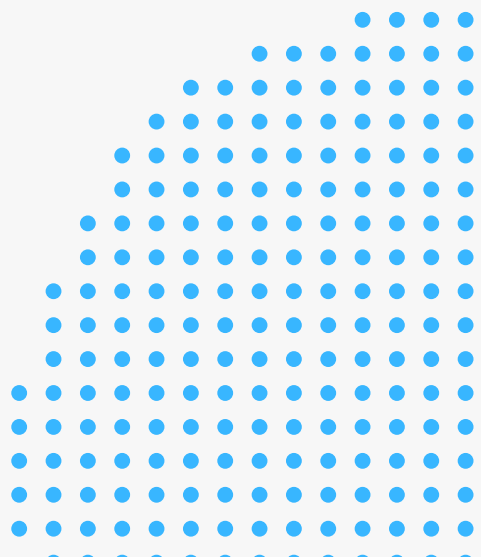
(Multiple School Districts,
Child Care Facilities)



The Purpose

With reliable drinking water and wastewater services:

- Healthcare Facilities retain the ability to treat patients and provide protection against the spread of COVID-19.
- Essential service businesses remain open and operational.
- Individuals can stay in their home and avoid unnecessary exposure to COVID-19.



The Project Scope

7.5K

Linear Feet of
Sewer Lines

25K

Linear Feet of
Water Lines

742

Services Directly
Impacted

40K+

Residents, businesses,
patients, and students
impacted.

Funding Collaboration



\$1.1 Million

\$9.9 Million

\$11 Million



Timeline of Success

1

Construction Manager

Day 1 to Completion

Constant oversight of the project to ensure that it is properly designed and constructed, and that there is no waste of funds or resources.

2

Design & Permitting

Months 0-9

Engineer designed plans and permitting through ODEQ.

3

Bidding & Construction

Months 7-24

Preparation of bid documents, award of contracts, mobilization, and construction.